

### Introduction

With the introduction of Windows® 7 there have been questions of compatibility between Windows® 7 and Advanced Motion Controls DriveWare™ software. Although the current DriveWare™ software release version 5.8.5 predates Windows® 7, it will install and run provided that the following steps are taken.

**Note:** *These steps have proved successful with Windows® 7 64-bit Enterprise, Windows® 7 32-Bit Professional. Home editions have not been verified.*

### Before Installing DriveWare™

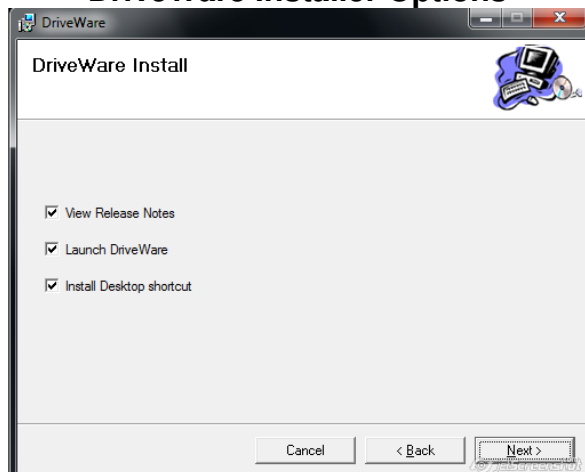
Before installing DriveWare, make sure you have the *Microsoft® Visual C++ 2005 Redistributable Package* installed. It is a free download available from Microsoft® here:

<http://www.microsoft.com/en-us/download/details.aspx?id=3387>

### Installing DriveWare™

Double-click the *setup.exe* program to start the installation process. During the installation several installations options are presented. Accept all defaults and leave these options checked. Failure to do so will result in DriveWare™ aborting the installation process.

#### DriveWare Installer Options



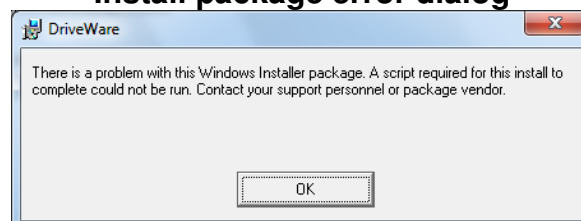
### Installation Complete

The installation should complete successfully if these steps are followed.

### Troubleshooting

If this error dialog is displayed, the default installer options were unchecked. Accept the installer defaults and check the installer options. See: *Installing DriveWare™*

#### Install package error dialog



If this error dialog is displayed, the *Microsoft® Visual C++ 2005 Redistributable Package* is not installed on your PC. See: *Before Installing DriveWare™*

#### Dll registration error dialog

