



 **ADVANCED**
MOTION CONTROLS



Click & Move[®]

Packaged Release

Packaged Two Axis Project

In most cases our C&M projects target a machine and an operator. The finished product must run in the target environment as a stand alone program. In this lesson we will “PACKAGE” our project for the target machine.

The package is a folder structure containing all necessary files for the motion control and the HMI. A batch file generated in the package process to kick start all packaged components.

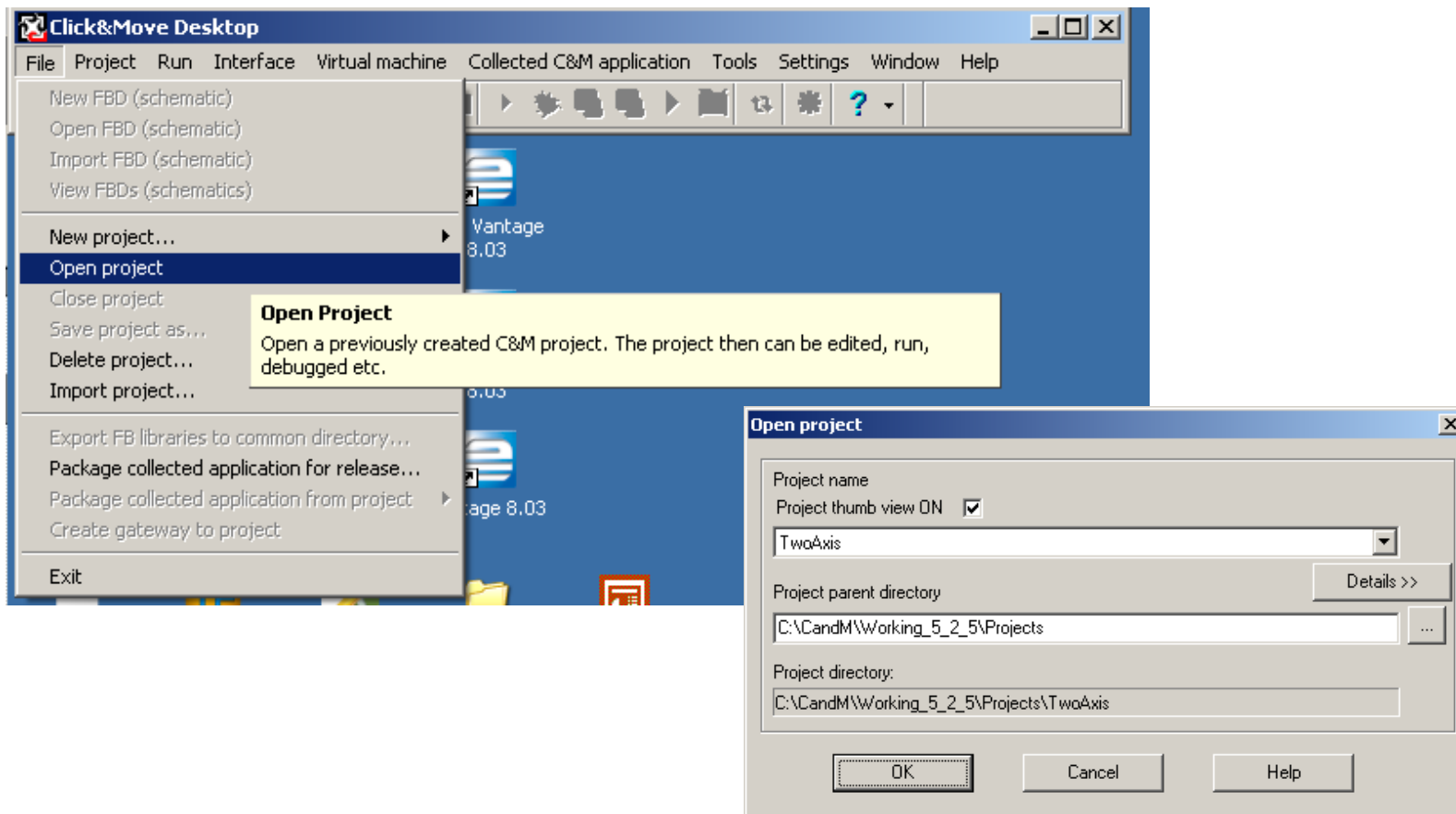


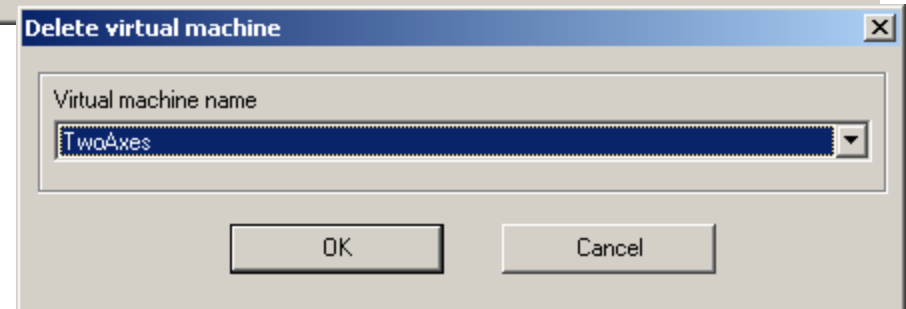
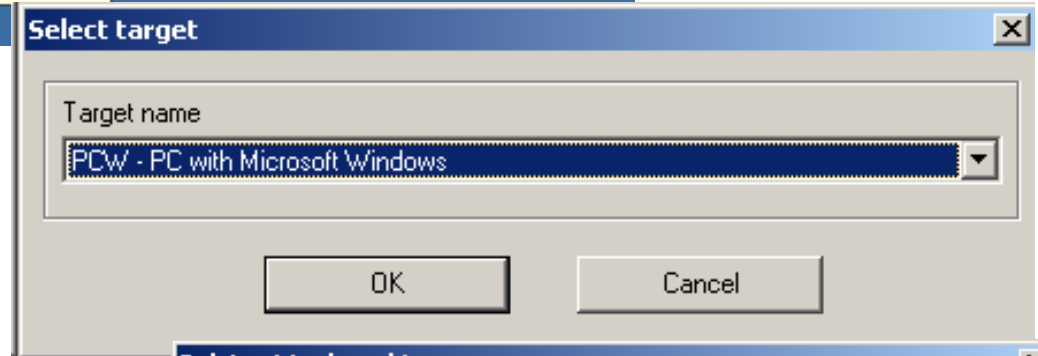
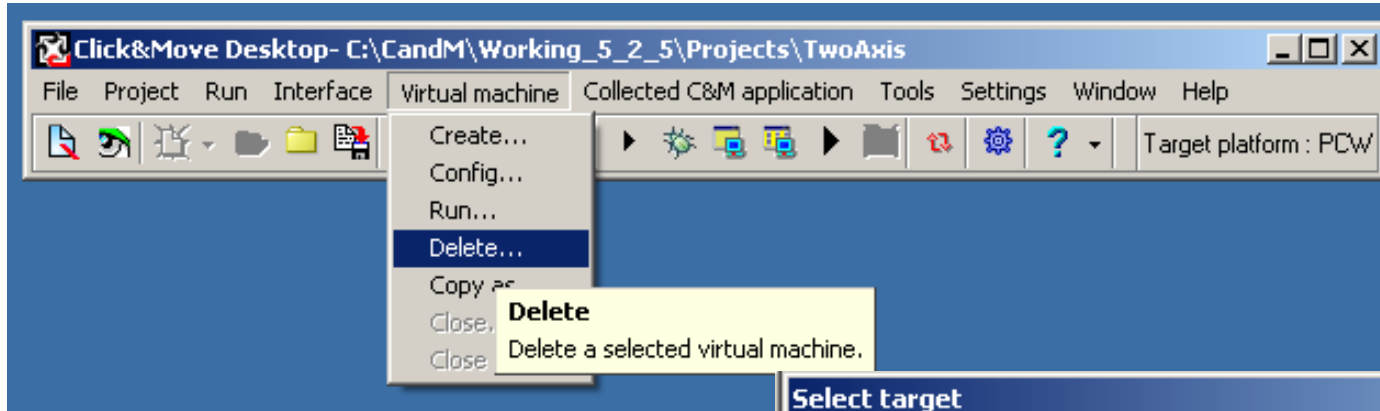
Click & Move[®]

Everything's Possible.

Packaged Two Axis Project


Start C&M, close the currently open project (if any) then click File, Open project. Select the TwoAxis project and click 'OK'.



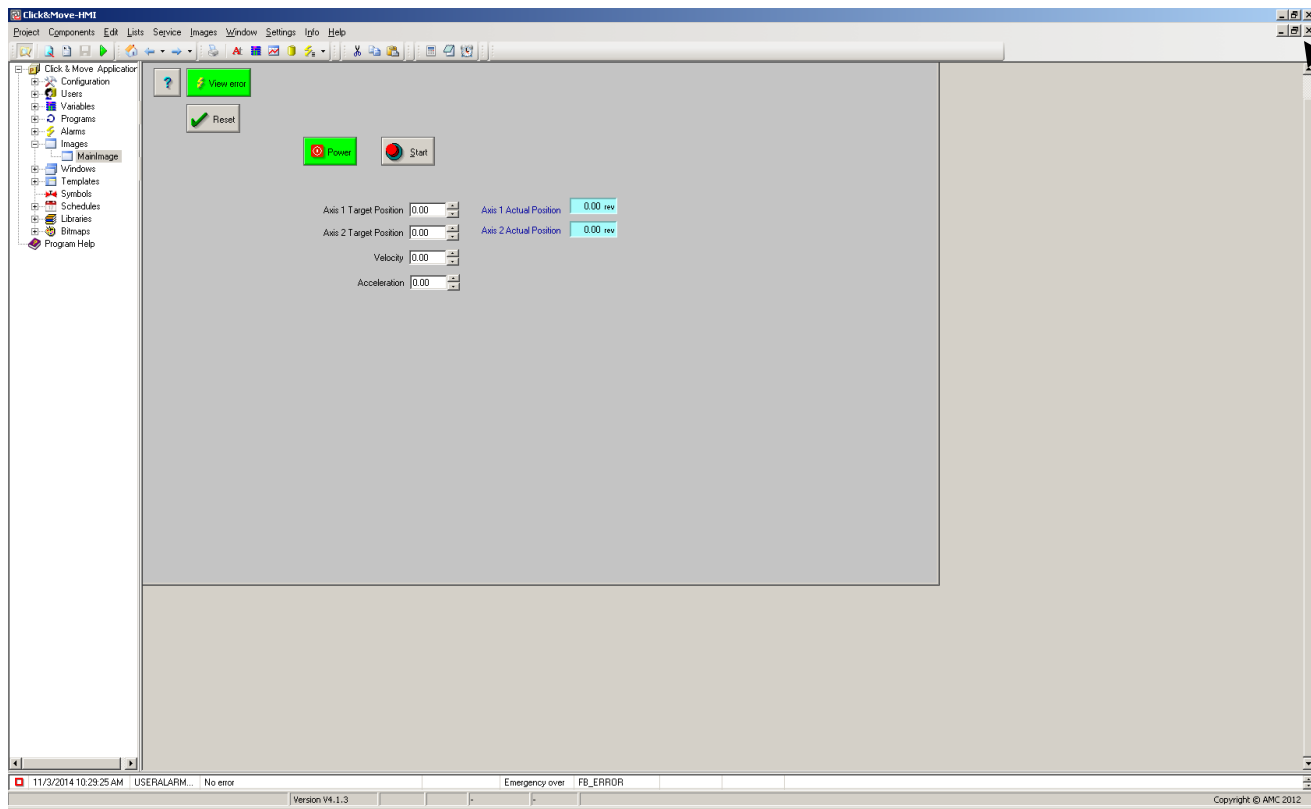


Delete the virtual machine from the project.

Packaged Two Axis Project

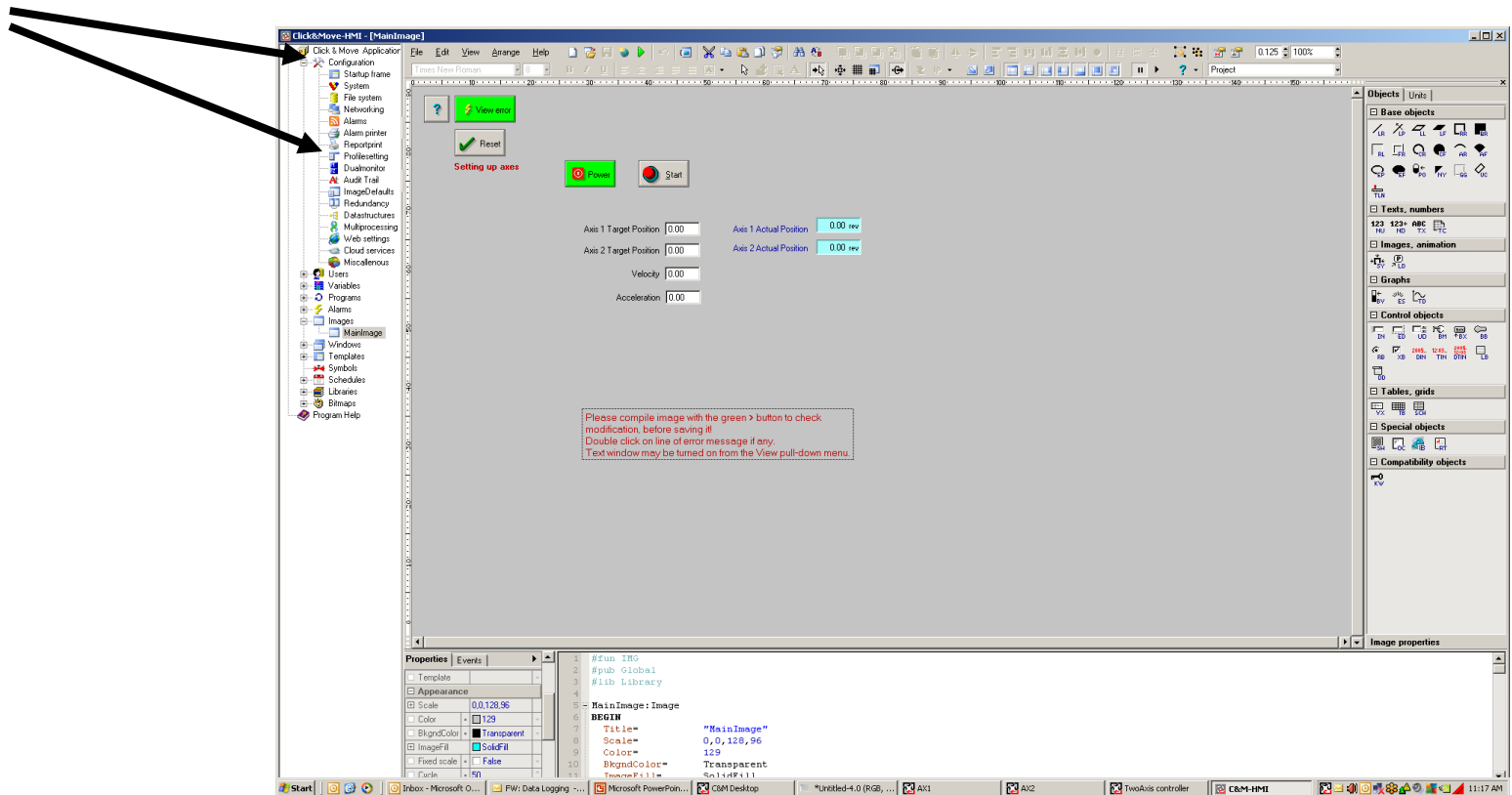
Click the Run All button,  (the large triangle) to launch all components of the project at the same time.

Expand the HMI to full screen if is not already that way. Use the full screen button .




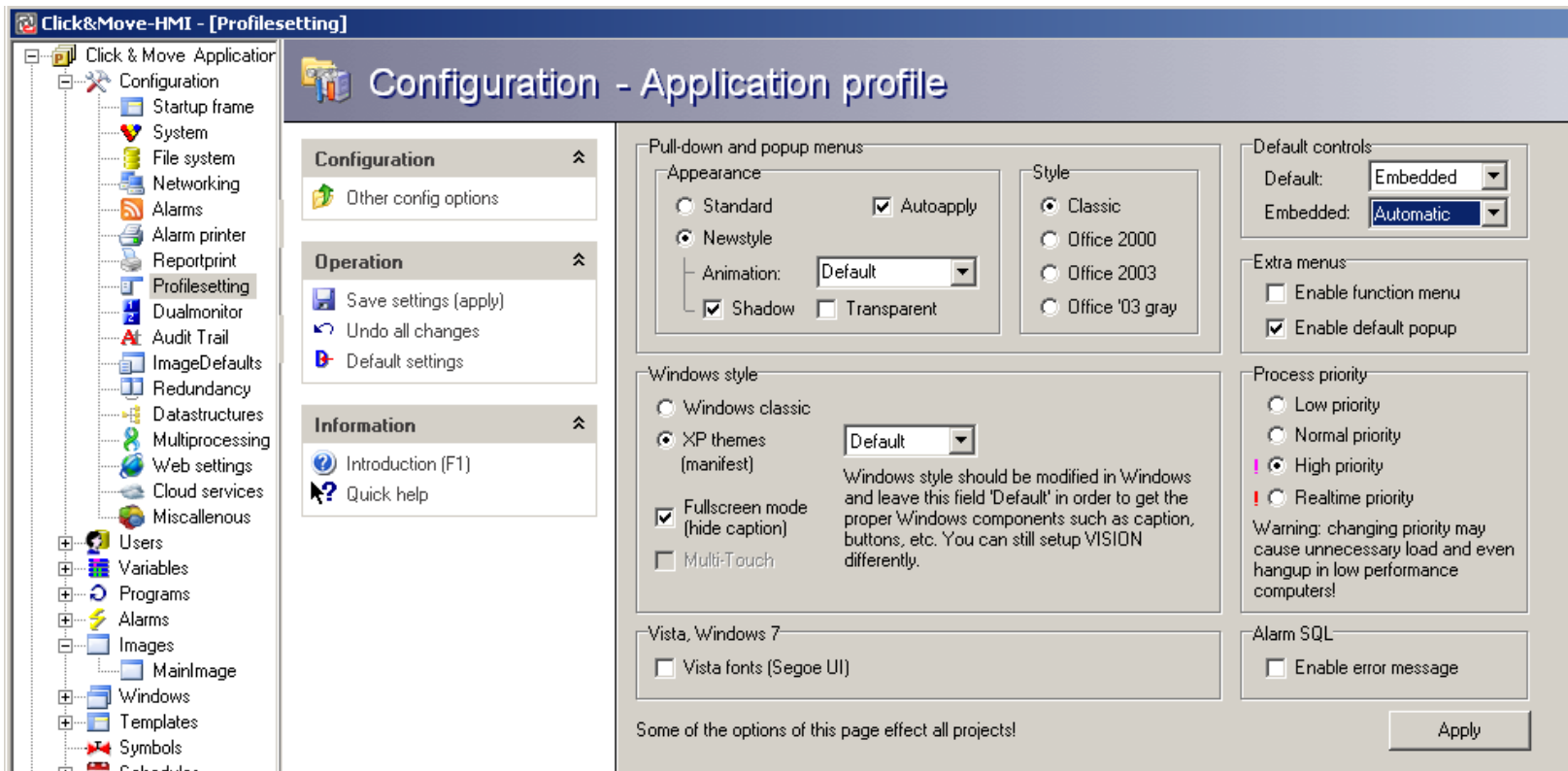
Packaged Two Axis Project

Lets set the project to run without any indication it is running under windows. In this mode if you auto start the batch file the user is not exposed to the operating system. In the project explorer choose Configuration and then Profilesetting.



Packaged Two Axis Project

Use these settings to control the appearance of the HMI at run time. Sometimes after we apply the full screen setting the HMI may generate an error. If it does just right click its button at the bottom of the screen and close it. The next time you start the HMI it will work as expected. Change the settings to match image below, click apply and then click the X button  to close the HMI.

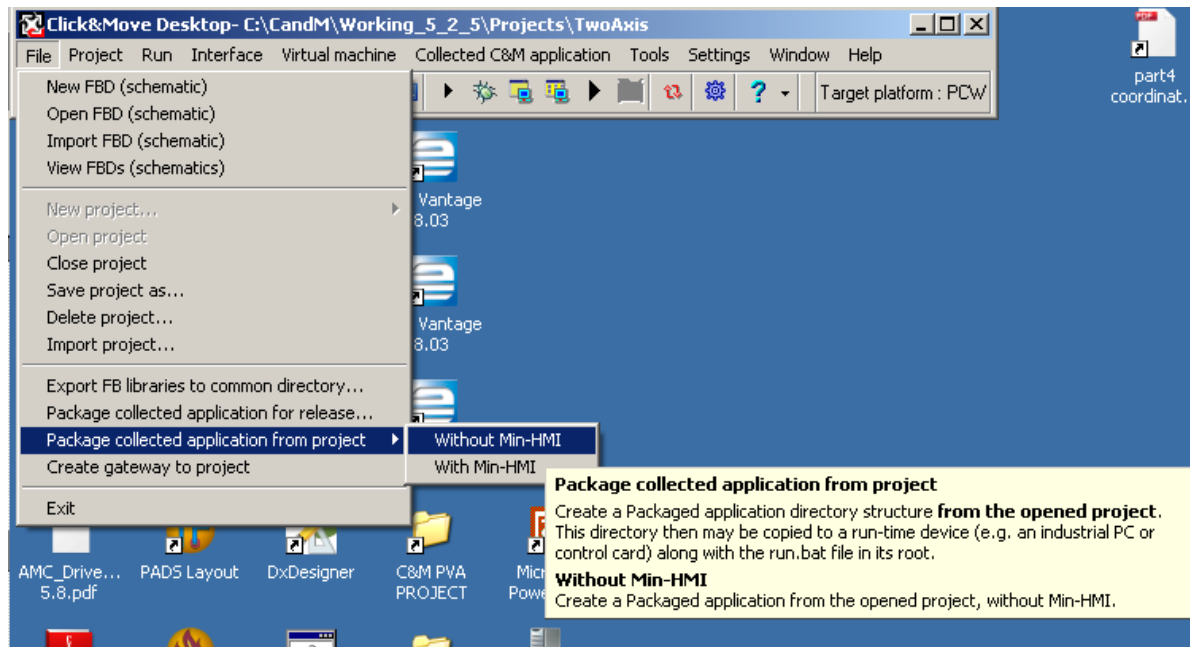


Packaged Two Axis Project

Restart the HMI with the  button. Use the F2 and F11 keys and the F12 key to turn off the tool bars and the project explorer.

Use “Control-Q” to Close the HMI, alternatly When the HMI is closed all the settings are saved and the HMI will appear just as we have set it the next time the application is launched.

Start the package operation, from the C&M desktop click File, Package collected application from project, without Min-Hmi. Wait for the packaged project to build.



Packaged Two Axis Project

Find the RUN.bat file located at
“C:\CandM\Working_5_2_5\Projects\TwoAxis\TwoAxisPackageMGW_PCW” and run it. The packaged project will load and run. Use the task manager to close the project.

You can move and rename the “TwoAxisPackageMGW_PCW” just do not disturb the contents.

