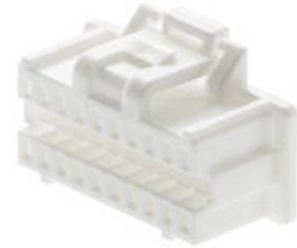


KC-MC1XFMCR01

FlexPro™ Series

Product Status: Active**Drive Compatibility**FM060-25-CM
FM060-10-CM
FM060-5-CM
FM060-25-RM
FM060-10-RM
FM060-5-RM

The **KC-MC1XFMCR01** mating connector kit from ADVANCED Motion Controls includes mating connector housing and crimp pins for use with FM060 CANopen and RS485 compatible servo drive and integration board assemblies. Each individual kit contains mating connector housing and crimp style contacts for the integration board communication, I/O and logic, and feedback connectors.

The recommended crimp tool for the contacts is Molex PN: 63819-1500 (not included with the KC-MC1XFMCR01). Pre-crimped leads (Molex PN: 797581018) are also available for purchase from many inline component vendors.

Included in KC-MC1XFMCR01 Kit:**Communication Connector Mating Connector**

Part Information: 6-port 1.00mm spaced single row vertical entry plug
Manufacturer Part Number: Molex: 5013300600 (housing); 501193 (contacts)
Quantity: 1 housing, 6 crimp-style contacts

**I/O and Logic Connector Mating Connector**

Part Information: 20-port 1.00mm spaced dual row vertical entry plug
Manufacturer Part Number: Molex: 5011892010 (housing); 501193 (contacts)
Quantity: 1 housing, 20 crimp-style contacts

**Feedback Connector Mating Connector**

Part Information: 30-port 1.00mm spaced dual row vertical entry plug
Manufacturer Part Number: Molex: 5011893010 (housing); 501193 (contacts)
Quantity: 1 housing, 30 crimp-style contacts

**Additional Contacts**

Manufacturer Part Number: Molex: 501193 (contacts)
Quantity: 9 crimp-style contacts



Photos for connector series reference only